

# DESTINATION NATION

TRAVEL PLANNER

ALL YOU  
NEED IS  
ECUADOR  
.TRAVEL

ecuador



love life







# BE AN EXPERT BEXPERT

## EXPERTS ON THE CRUISE TRAIN

Traveling from the heart of the  
Andes to the Pacific Coast

A trip through the history, culture and landscapes of a charming country. A tour through the majestic Andes and the beautiful Ecuadorian Pacific Coast. A journey through the past and present of a diverse territory: blessed with natural wonders, inhabited by unique cultures and full of friendly people. Welcome to an unprecedented adventure aboard the one hundred year old Ecuadorian Railway Train! **EC**



# TRAVEL PLANNER

## AN EXCLUSIVE AND ONE OF A KIND ON BOARD TRAIN EXPERIENCE

The Ecuadorian Railway is considered a priceless piece of history, a monumental feat of engineering and a symbol of the unity that connects the Andes and the Ecuadorian Pacific Coast. Its hallmark product, the Cruise Train, is one of the 10 best touristic trains, and in 2013 it won the Best Wider World Project of the British Guild of Travel.

The route is approximately 450 km (279.62 mi) long and reaches an altitude of 3,600 meters above sea level, and descends all the way down to sea level. This journey lasts four days and travels between Quito and Guayaquil, although trips are also available for two or three days. The train has four carriages, each with a capacity of 54 people. The carriages have elegant tables, panoramic windows, lockers, a café-bar and an open terrace to enjoy the landscape. Along the trip, the temperature can vary between 10°C and 21°C (50°F and 69.8°F) in the Andes and 22°C and 28°C (71.6°F and 82.4°F) on the Coast. The voyage includes lodging in hotels and haciendas, guided tours, spanish-english guides and a bus for excursions. It is a fantastic experience, a pleasure for tourists of all tastes, upholding high safety standards and allowing you to discover the beauty of the country with the largest biodiversity per square meter in the world. **EC**

### BE AN EXPERT

All about the HOWs



#### Train speed

It is a vehicle of grand touristic value. Not a means of transportation in and of itself. The speed varies between 30 and 60 km/h (18.64 and 37.28 miles/h).



#### Safety

The trip takes you from 100 up to 3,600 meters above sea level (328 to 11,811 ft.), so travelers with a heart condition are recommended to contact their doctor along different points of the journey.



#### Technology

The Cruise Train has a telephone system along most of the route. Ecuador has three operators: Claro, Movistar and CNT.



#### Haciendas

The train journey includes visits to historic haciendas, both in the Andes and on the Pacific Coast. Travelers can marvel at these special atmospheres.



#### Money

It is recommended to bring cash, as it is not always easy along the way to find an ATM or a money exchange agency.



#### Protection

It is recommended to bring sunglasses and sunblock with a minimum SPF of 25. The sun along the equator can have a strong effect on the skin and eyes.



#### Tourist guide

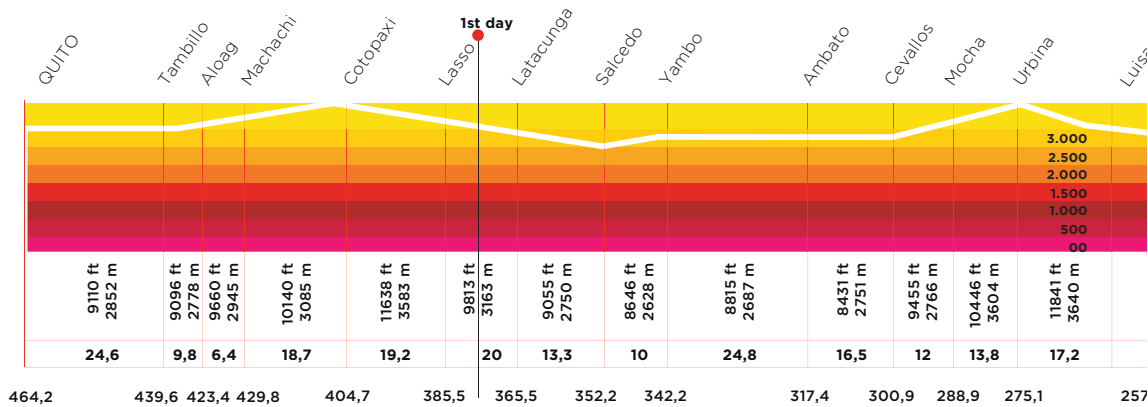
The Cruise Train has specialized bilingual guides to answer any question you may have regarding the trip or the services on board, as well as on excursions.



#### Carriages

The train has four carriages, each with a capacity for 54 passengers. Two of the carriages have tables and seats, the third is a café-bar, and the fourth has a social area and a terrace.

### THE TRAIN ROUTE







Climate

The climate in Ecuador has roughly two seasons: a wet and a dry season. The weather can change greatly in the mountains.

ANDES: the days are warm, with an average temperature of 21°C (69.8°F) and cool at night with a temperature of 8°C to 10°C (46.4°F to 50°F).

COAST: From May to December, the weather is temperate and dry. From January to April, however, it is warm and rainy. Daytime temperatures are around 31°C (87.8°F) in the day and 25°C (77°F) at night.



What to bring

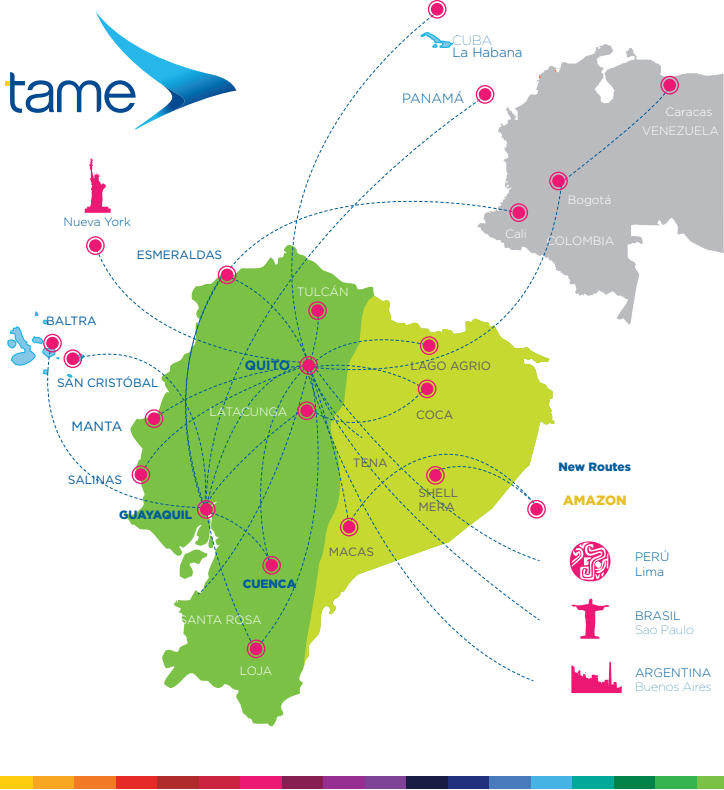
It is best to wear layers. Cool shirts during the day, jumpers or coats at night. Temperatures may vary from 8°C to 25°C (46.4°F to 77°F).

Awards

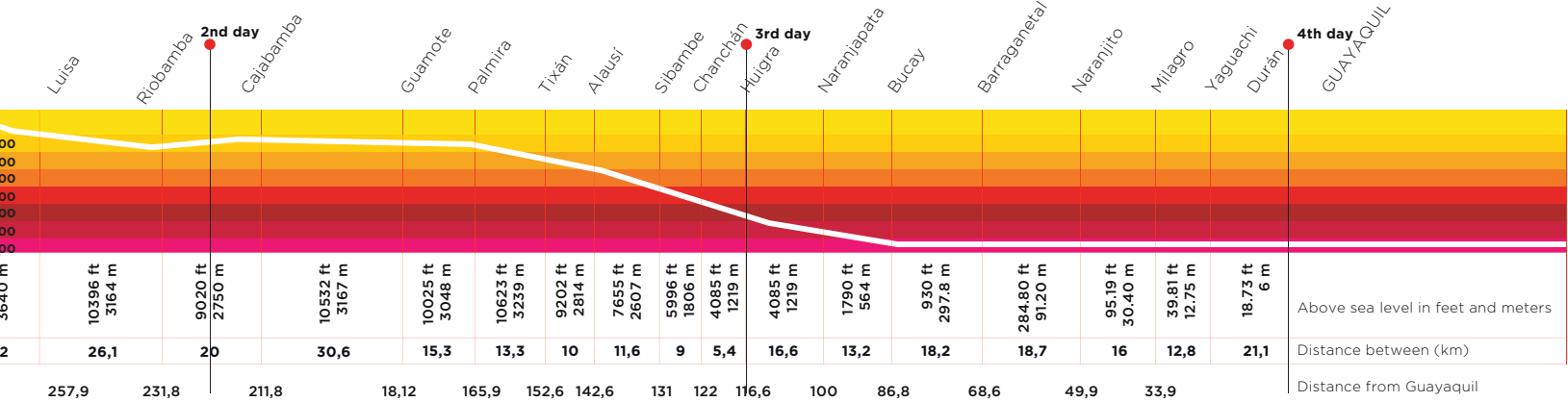
The hallmark product of Ecuador's Train company: the Cruise Train, traveling through the country from Quito to Guayaquil and back, won the Best Wider World Project Award for the best touristic product outside of Europe, granted by the British Guild of Travel Writers. It has also been nominated for the Promotional Success Award by the Latin American Travel Association (LATA members).

The nominations were presented by the British journalists: Anthony Lambert from the Railway Gazette International and the Daily Telegraph, and Dan Benians of Distinctive Americas. All you need is Ecuador. **EC**

Tame flight routes



Tame, the Ecuadorian flagship airline company, is the main air transportation company in Ecuador. It serves 15 domestic and 9 international flight destinations, including New York, Sao Paulo and Buenos Aires.



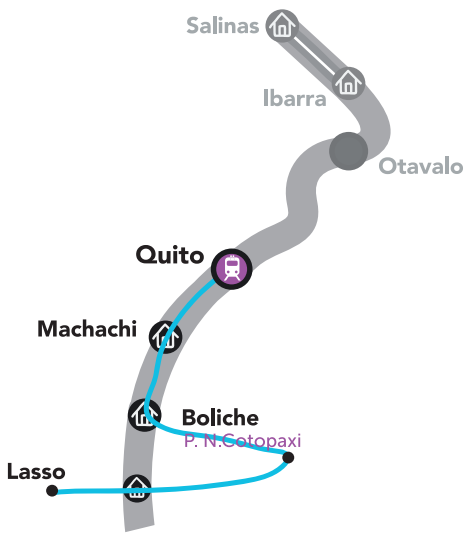


# DAY 1

## Quito - Lasso

**Distance:** 78 kilometers (48.47 miles)  
Cotopaxi National Park, lunch in a traditional hacienda, indigenous party

If you start your trip from Quito (province of Pichincha) –you can also start from Guayaquil– the first surprise that awaits is the patrimonial beauty of Chimbacalle Station, one of the Seven Wonders of the Ecuadorian capital. Passing through the picturesque town of Machachi, the train arrives at Boliche Station, located inside Cotopaxi National Park, where, after a short ride on comfortable and modern buses, travelers can take a short walk around ice-cold Limpiopungo Lake and its impressive landscapes. The journey continues on to the traditional hacienda of San Agustin del Callo, with Inca architectural remains, allowing you to discover Andean agriculture. The first day of the trip ends in Lasso (province of Cotopaxi) with a dance presented by the local community, dinner and lodging in one of the hotels in the area. **EC**



### INTERESTING FACTS

Cotopaxi National Park gets its name from one of the most iconic volcanoes in the country. Reaching 5,897 m (19,347 ft.), a large variety of Andean wildlife species live around the volcano: white-collared eagles, moor foxes, spectacled bears and birds. At the hacienda San Agustin de Callo you can taste delicious Ecuadorian dishes.

### Chimbacalle Station

A patrimonial building with more than 100 years of history and one of the touristic gems in the city of Quito. Its fully renovated infrastructure includes multipurpose rooms, the Train Coffeeshop and an interesting museum.

### Train Museum

The Train Museum, located in what used to be an abandoned storage space of the train company, displays old passenger boarding books, an old carriage, tools used to fix locomotives, and historic pictures of the route.



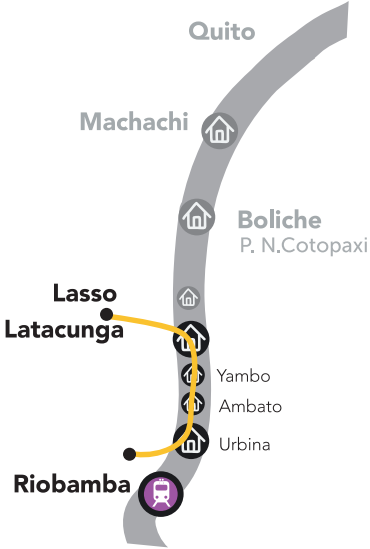


# DAY 2

## Lasso - Riobamba

**Distance:** 139 kilometers (86.37 miles)  
Visit the Flower Plantation and the Interpretation Center of the hieleros (ice workers) of Chimborazo

After breakfast, the Cruise Train continues its journey to a Flower Plantation that allows you to learn about production of the internationally renowned Ecuadorian roses. The second destination is a heritage hotel in the city of Ambato (province of Tungurahua), where tourists can enjoy a delicious meal before heading on to the station of Urbina, located at 3,640 meters (11,942 ft.) above sea level. This place offers a spectacular view of the Andes Mountains and has an interpretation center where you can meet the last human that extracts ice from the highest volcano in the country: Chimborazo (6,268 meters above sea level – 20,564 ft.) At the end of the day, travelers are taken to Riobamba (province of Chimborazo) for lodging and to enjoy a meal at one of the hacienda-hotels of the area. **EC**



**CURIOUS DATA:**  
The Chimborazo's Ice workers were indigenous people that usually climbed more than 5,000 meters (16,404 ft) to extract big ice blocks from the volcano to sell down in the markets. It was a very dangerous, tiring work, not well paid and usually done with the help of a mule and rudimentary tools.

**Ecuadorian roses**  
Ecuador is internationally renowned as one of the best producers of roses. Some of the 450 varieties grown in the country are well-known worldwide for their beauty and the size of the stem, which can reach up to two meters.

**Hacienda-hotels in Ecuador**  
The country offers many traditional haciendas that focus their services on tourism. These are mostly located in the agricultural and ranching areas throughout the Andes and along the Coast, and they allow you to learn about the rural culture of these regions.





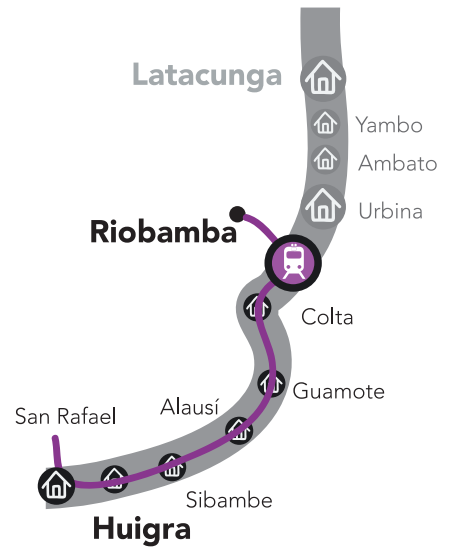
# DAY 3

## Riobamba - Huigra

**Distance:** 115 kilometers (71.46 miles)  
Visit the oldest church in the country, Guamote market, Nariz del Diablo

The third day starts with a tour through the beautiful Andean landscapes before reaching Colta station. During a short stop in this area it is possible to visit the Balbanera church, the first Catholic church in the country, where the murals are proof of approximately 500 years of history and are testament of the first settlements of Catholicism on American soil. Following the Cruise Train route, the next destination is the indigenous community of Guamote (province of Chimborazo), home to the Andean market where ancient traditions are still upheld and where tourists can witness commercial trade of products, similar to what occurred prior to the arrival of the Spanish.

In the afternoon the train stops at the station of Alausi before starting one of the most anticipated events of the day: an adventurous trip along the rails that leads to the mythical Nariz del Diablo (Devil's Nose), a winding track through the Andes Mountains, reason why the Ecuadorian Railway is known as the "most difficult train in the world". The day ends with the arrival at the picturesque town of Huigra, located on the cusp of the Andes and the Pacific Coast of Ecuador, and a meal and lodging at the Eterna Primavera Hostel. **EC**

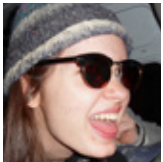


**BALBANERA**  
First Catholic church of Ecuador.



**INTERESTING FACTS**  
At Colta, tourists can attend an exposition of handicrafts made from tagua (a raw material from this region). At Guamote market, some souvenirs are sold, among which the ornaments and accessories of indigenous attire usually attract the attention of the visitors. From Sibambe you can take pictures of the peculiar geographic formation known as Nariz del Diablo.



**TESTIMONIAL**ALBERTA CAPUTTI  
ARGENTINA

We took the first train in the morning from Alausi headed to Nariz del Diablo. The service, the maintenance, the state of the carriages, the personnel on board, everything is excellent.

# LA NARIZ DEL DIABLO

## Landscape, adventure and history combined

Located between kilometers 131 and 138 (between miles 81.4 and 85.75)  
The altitude is 1,900 meters above sea level (6,233 ft.)

Nariz del Diablo (Devil's Nose) is an enormous pending rock in the Andes and the Ecuadorian Cruise Train traverses its surrounding hills. Due to the difficulty of traveling this winding track, along a stretch of the route the train has to advance before going backwards on its path to descend around 100 m (328 ft.). This is a trip along the edge of the mountain, offering some spectacular views of the mountain range and an unforgettable adventure for tourists.

Located in the parish of Pistishi (province of Chimborazo), Nariz del Diablo owes its name

to the peculiar form reminiscent of a human nose, and the difficulty it presented when building the railway along this part of the Andes, more than a century ago.

It is located between kilometers 131 and 138 (between miles 81.4 and 85.75), at an altitude of 1,900 meters above sea level (6,233 ft.). The temperature varies between 0°C and 16°C (0°F – 60.8°F), so it is recommended to bring warm clothing. The journey includes entrance to the Condor Puñun Museum, as well as a guide. **EC**

Cruise Train  
Excursion  
includes:

- Bilingual guide, Spanish-English
- Snacks service
- Air-conditioning
- Face to face seats with tables



### Lakes of Ozogoché

On the outskirts of the canton of Alausi are the famous Lakes of Ozogoché, part of Sangay National Park, where thousands of migrating birds come each year to dive into the water and die for unknown reasons.

### Andean moors

Along the route through the Ecuadorian Andes, a variety of moors can be seen, located at altitudes above 3,000 meters above sea level (9,842 ft.). These areas are known for low temperatures, their ability to accumulate water, and the presence of Espeletia.



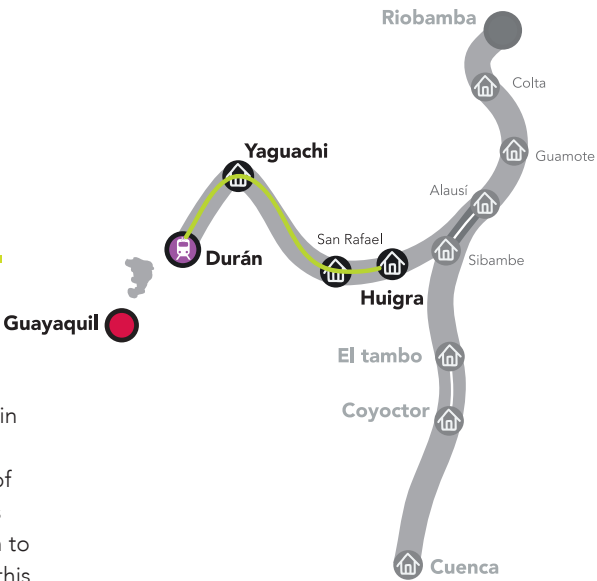
# DAY 4

## Huigra - Duran

**Distance:** 117 kilometers (72.7 miles)  
Visit the Shuar community, climate zone transition between the Andes and the Pacific Coast

In the morning, passengers are taken in one of the most comfortable and modern buses included on the journey to the Huigra Station (province of Chimborazo), where the Cruise Train awaits. The Chanchan River can be seen at the beginning of the trip. On this part of the tour, travelers witness the transition between the landscapes and climate of the Andes and those of the Pacific Coast. Upon arrival at Bucay Station (province of Guayas), the adventure continues with a short hike through a cloud forest, where they can enjoy the lush vegetation, in addition to a visit to the Shuar community of El Limonar, where tourists discover the ancient practices of this culture, their habits, ways of life, and enjoy the beautiful dances, handicrafts and the food.

After a lunch at Hacienda San Rafael and a walk through the enchanting coffee and cocoa plantations, the train heads for Yaguachi Station, crossing through banana, sugarcane and rice fields, before arriving at the final stop, Duran Station, where travelers are then taken by bus to the modern city of Guayaquil. **EC**



### COFFEE AND COCOA

Walk through cocoa plantations.



#### INTERESTING FACTS

On the last part of the journey, between the stations of Yaguachi and Duran, as well as the most important parts of the trip, classic steam locomotives are used. Due to their classic and historic design, these vehicles are considered to be true national heritage and have been carefully restored and equipped to offer the best comfort and safety.

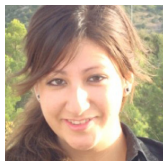






## TESTIMONIAL

GISELLE MEDIAVILL  
ESPAÑA



I loved this journey, to see the countryside and capture images that leave you in awe, on top of all the cultural visits.

# CHARM, COCOA AND CULTURE

## The millenary Shuar community

Shuar's Territory is located mainly in the Amazon and a small population on the Pacific Coast

**Clothing:** Their distinctive clothig is a crown made of toucan and other exotic birds' feathers

The Shuar community living along the Limones River moved to this sector of the Pacific Coast from their traditional lands in the Ecuadorian Amazon approximately 70 years ago, but they have succeeded in maintaining their culture, traditions and language. One of the most delicious dishes, enjoyed by the tourists, the traditional maito, consisting of fish or chicken rolled in a bijao leaf (a local plant) and roasted on an open fire. It is usually accompanied with bananas or yucca.

The Shuar are one of the largest indigenous nations of the Ecuadorian Amazon. Some of the most remarkable attributes of their attire include a colorful crown made from feathers of toucans and other local birds, as well as the complex and animal-inspired shapes and paintings they wear on their faces. The men go about bare-chested while wearing a type of skirt with vertical lines called itip, which they color in red, black, white and purple with the aid of natural pigments. **EC**

Cruise Train  
Excursion  
includes:

- Bilingual guide, Spanish-English
- Snacks service
- Air-conditioning
- Face to face seats with tables



## The canton of Bucay

Located in the province of Guayas, the canton of Bucay is known for its natural wealth and adventure activities: rappelling, climbing and hiking, as well as haciendas where visitors can take hikes and horseback riding tours.

## Guayaquil and surrounding areas

Guayaquil offers a wide and exclusive variety of tourism infrastructure: hotels, restaurants, nightlife, etc. The city also has cultural venues, such as theaters and museums, and is located only kilometers away from beaches, such as Salinas.





Chimbacalle station, Quito



Durán Bucay station, Guayaquil



## SUMMARY

CRUISE TRAIN:  
COMFORT,  
EXCLUSIVITY AND  
ADVENTURE FOR  
TOURISTS IN THE  
MIDDLE OF THE  
WORLD

The 11 touristic routes offered by the Ecuadorian Railway are Festive Machachi, Route to Boliche, Infinite Moors, Volcano Trail, Nariz del Diablo, Liberty Train, Terraces Trail, Inca Baths, Ice Train, Ancestors Trail, and Sweet Train. All of these trips take one day, including the return to the point of departure. The exclusive service on the Cruise Train covers nearly all these stretches. It is definitely the best and most complete way to experience an adventure along Ecuadorian railways.



The sound of the old railroad machinery, the steam whistle announcing its arrival at the stations and the experience on board these well-preserved patrimonial vehicles, provide an enriching adventure reminiscent of the splendor of times long gone, in addition to the natural charms of the Ecuadorian landscape: spectacular mountains, lush plains, national parks, rivers, lakes and winding roads, as well as stays in traditional haciendas, visits to indigenous markets, communities, museums and contact with the cultures of the Andes and Pacific Coast. It is a journey through time and across the natural beauty of Ecuador.

The Ecuadorian Railway currently offers 11 routes, each of which take one day. The luxury service, known as Cruise Train, covers nearly all of these itineraries, providing a comprehensive and unique experience. The train stations are equipped with cafe service, souvenir shops selling handicrafts related to the route, squares where local products are sold, museums that evidence the history, functioning and importance of the railway, and accommodation for visitors. The journey can be taken from Quito to Guayaquil or vice versa. Both cities (the two most important cities in Ecuador) offer a myriad of tourist activities and are located near other destinations you will not want to miss. All you need is Ecuador. **EC**

**ALL YOU  
NEED IS  
ECUADOR  
TRAVEL**



ICONS/

# Iconography



# AREAS

## Protected Areas

## National Parks

- 1 Cajas
- 2 Cotopaxi
- 3 Galapagos
- 4 Llanganates
- 5 Machalilla
- 6 Podocarpus
- 7 Sangay
- 8 Sumaco
- 9 Yasuni

### Biological Reserves

- 10 Limoncocha  
11 Marina Galapagos  
12 Antisana  
13 El Angel  
14 Cayambe-Coca  
15 Cayapas-Mataje

## 16 Cotacachi-Cayapas

- 17 Ilinizas  
18 Mache-Chindul  
19 Manglares-Churute

## Geobotanical Reserve

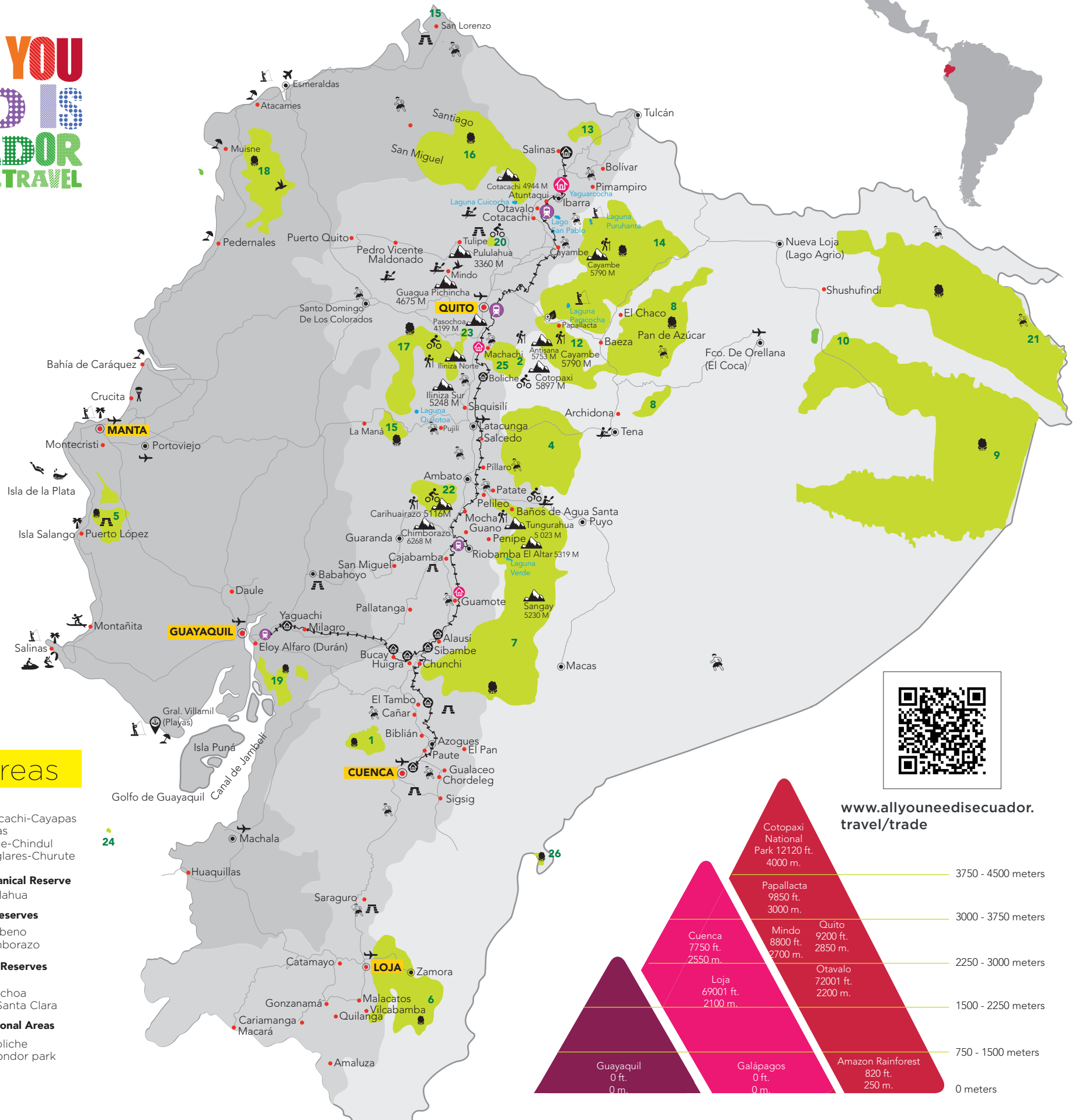
- 20** Pululahua  
**Fauna Reserves**  
**21** Cuyabeno  
**22** Chimborazo

## Wildlife Reserves

- 23** Pasochoa  
**24** Isla Santa Clara

## Recreational Areas

- 25** El Boliche  
**26** El Condor park



[www.allyouneedisecuador.travel/trade](http://www.allyouneedisecuador.travel/trade)



BE AN EXPERT TRAVEL PLANNER

Distances

	RIOBAMBA	COCA	LOJA	GALAPAGOS	CUENCA	GUAYAQUIL
QUITO	116 mi 188 km 4 h	186 mi 300 km 30 min 9 h	402 mi 647 km 50 min 12 h	813 mi 1310 km 2 h 15 min	274 mi 442 km 45 min 10 h	260 mi 420 km 35 min 8 h
GUAYAQUIL	144 mi 233 km 5 h	375 mi 605 km * 2 h - 4 h	257 mi 415 km 30 min 8 h	621 mi 1000 km 1 h 30 min	155 mi 250 km 30 min 4 h	
CUENCA	157 mi 254 km 4 h	393 mi 633 km * 2 h 20 min	127 mi 205 km 4 h			155 mi 250 km 30 min 4 h

\* With connection

Departure flights to Ecuador



All about the HOWs

Minimum price for a taxi ride.

**USD 1**

Price for a bus ride or public transportation

**0,25 CTVS**

QUITO AND GUAYAQUIL INTERNATIONAL AIRPORTS

**BICI Q**  
Free bicycle service in Quito

**RESTAURANTS**  
39 LUXURY RESTAURANTS  
699 FIRST CATEGORY

**HOTELS**  
MORE THAN 150 FIVE AND FOUR STAR HOTELS

FOR MORE INFORMATION :  
WWW.ALLYOUNEEDISECUADOR.TRAVEL/TRADE

TRAVELING BY TRAIN only along touristic routes between points of interest

[www.trenecuador.com](http://www.trenecuador.com)

**MUSEUMS**

Ecuador has an enormous archeological and cultural richness in all its regions.

[www.museos.gob.ec](http://www.museos.gob.ec)

**GAS STATIONS**  
If you rent a vehicle, you will have no problem getting gas with the enormous offer of service stations along all roads.

**INTERNET TELEPHONE**

There are three phone and internet operators in Ecuador: Claro, Movistar and CNT.

**CAR RENTAL**

There are a number of companies at the airport and at main cities in the country:

AVIS  
BUDGET RENT A CAR  
LOCALIZA  
SIMON CAR RENTAL  
HERTZ

**\$ UNITED STATES DOLLAR** is the official currency in all Ecuador

**CASH/ CREDIT CARDS**  
Ecuador has a vast network of ATMs in all cities throughout the country. Most local shops also accept all types of credit cards: Visa, MasterCard, American Express, Diners Club.

**Routes**  
Ecuador's Roads and Highways are one of the best in Latinamerica.

Ecuador has public and private hospitals all around the country. There is medical assistance calling 911 from any telephone.

**4 WORLDS**  
On a relatively small territory, visitors can enjoy the splendid beaches of the Pacific, the beautiful landscapes of the Andes, the magic of the Amazon and the incredible biodiversity of the Galapagos Islands.

GALAPAGOS ISLANDS  
ANDES  
PACIFIC COAST  
AMAZON

**ELECTRICITY/VOLTAGES**  
In Ecuador, electricity is provided at 110 V and 60 Hz, with single-phase, dual-wire outlets.

